

LIST OF FITTINGS:

- (A) 6" FIRE HYDRANT HEAD, JONES J-3710/3775 FOR COMMERCIAL W/ 4" & 2-1/2" OUTLETS, 8 BOLTS.
- (B) DUCTILE IRON SPOOL, WITH STAINLESS STEEL #316 NUTS AND BOLTS.
- (C) 6" CAST IRON BURY, MJ BY FLANGE.
- (D) 6" DUCTILE IRON PIPE, PRESSURE CLASS 350.
- (E) 6" RESILIENT WEDGE GATE VALVE, MJ BY FLANGE.
- (F) 8" VALVE CAN AND COVER PER W-6 OR W-6A.
- (G) 36" X 36" X 6" THICK CONCRETE PAD WITH WWF 1.6 X 1.6 ON 6" OF 3/4" CRUSHED ROCK.

NOTES:

1. WHEN THE SIDEWALK IS 5' WIDE OR LESS AND ADJACENT TO THE CURB, FIRE HYDRANTS, AIR RELEASE VALVE AND OTHER INSTALLATIONS THAT PROTRUDE ABOVE THE GROUND SHALL BE LOCATED BETWEEN PROPERTY LINE AND BACK OF SIDEWALK.

6" FIRE HYDRANT ASSEMBLY

SCALE: NONE

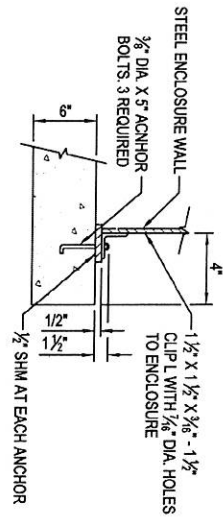


TOM COLEMAN EXECUTIVE DIRECTOR

DATE _____

6" FIRE HYDRANT
ASSEMBLY

W-5

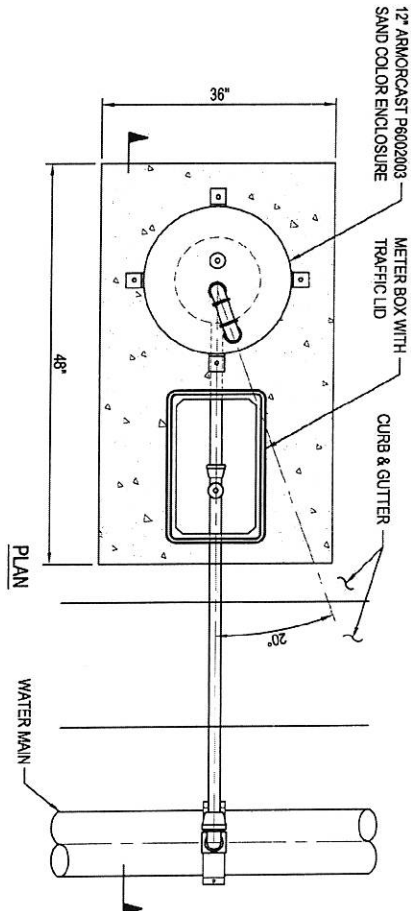


ANCHOR DETAIL

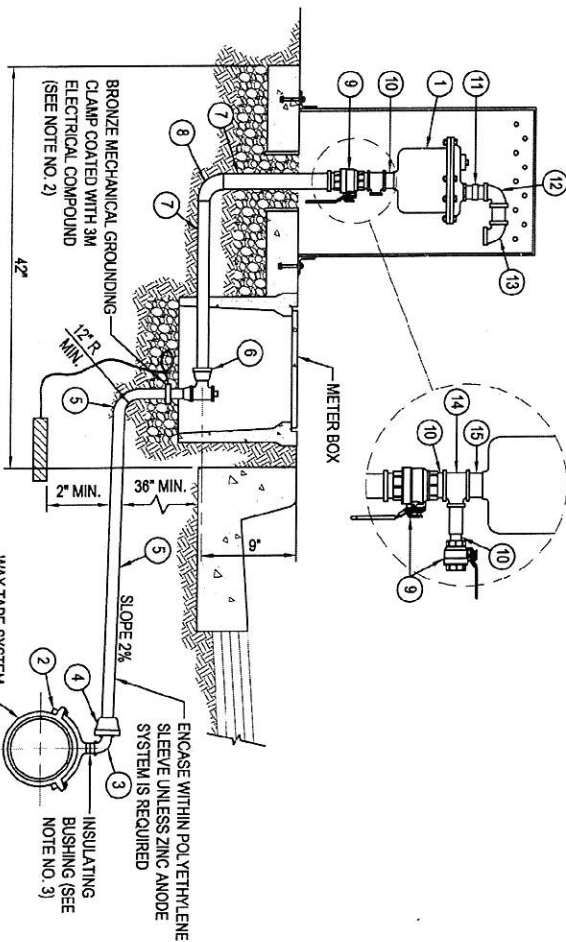
MATERIAL LIST FOR 1" AND 2" VALVE ASSEMBLY			
ITEM	DESCRIPTION	MATERIAL	MANUFACTURER
1	COMB. AIR RELIEF & VACUUM RELEASE VALVE	CAST IRON	SEE SECT. 15089
2	STRAP SERVICE SADDLE	BRONZE	SEE W-1 OR W-2 MATERIAL LIST
3	90° STREET ELBOW	BRASS	SEE W-1 OR W-2 MATERIAL LIST
4	CORPORATION STOP	-	SEE W-1 OR W-2 MATERIAL LIST
5	TUBING	TYPE K/C COPPER	SEE W-1 OR W-2 MATERIAL LIST
6	ANGLE METER STOP	BRONZE	SEE W-1 OR W-2 MATERIAL LIST
7	NIPPLE	BRASS	SEE W-1 OR W-2 MATERIAL LIST
8	90° ELBOW	BRASS	SEE W-1 OR W-2 MATERIAL LIST
9	BALL VALVE WITH HANDLE	BRONZE	SEE W-1 OR W-2 MATERIAL LIST
10	SHORT NIPPLE	BRASS	SEE W-1 OR W-2 MATERIAL LIST
11	UNION	SCH 80 PVC	SEE W-1 OR W-2 MATERIAL LIST
12	90° STREET ELBOW	SCH 80 PVC	SEE W-1 OR W-2 MATERIAL LIST
13	90° STREET ELBOW WITH SCREEN	SCH 80 PVC	SEE W-1 OR W-2 MATERIAL LIST
14	TEE	BRASS	SEE W-1 OR W-2 MATERIAL LIST
15	SHORT NIPPLE	STAINLESS STEEL	SEE W-1 OR W-2 MATERIAL LIST

NOTES:


1. FOR PIPELINES LARGER THAN 10" BSMWC WILL DETERMINE SIZE OF AIR AND VACUUM RELEASE.
2. FURNISH FITTINGS OF LIKE MATERIAL AS REQUIRED.
3. IF DIRECTED BY BSMWC, COMB. AIR VALVE ASSEMBLY SHALL BE PROVIDED WITH A ZINC ANODE SYSTEM TO PROTECT FROM CORROSION.
4. ISOLATE COPPER TUBING LATERALS FROM STEEL AND DIP PIPELINES. PROVIDE A NYLON INSULATING BUSHING BETWEEN THE SERVICE SADDLE AND THE CORPORATION STOP. THE OUTLET SIZE ON THE SERVICE SADDLE SHALL BE INCREASED 1/2-INCH TO ACCOMMODATE THE BUSHING. PROVIDE WAX TAPE FOR BRONZE SADDLE.

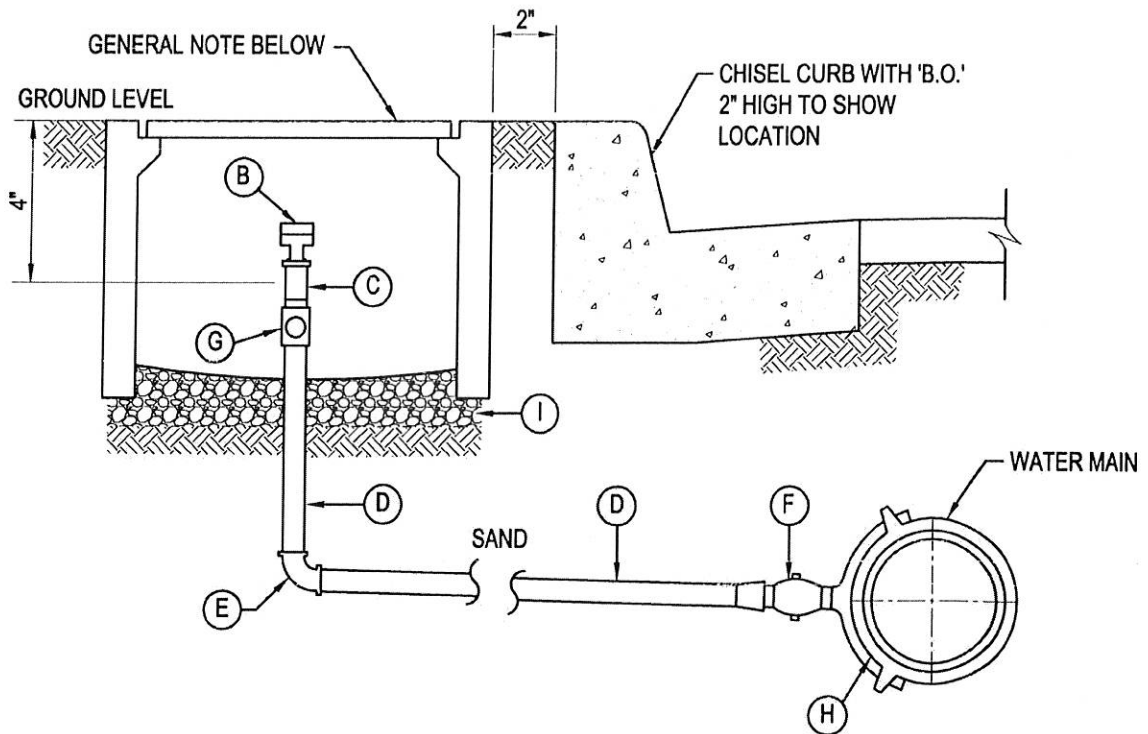


PLAN



SECTION A-A

	TOM C. EVAN	EXECUTIVE DIRECTOR	STANDARD COMBINATION VALVE ASSEMBLY	W-4
	DATE			



LIST OF FITTINGS

- (A) 6" BROOKS NO. 4 1/2 BOX WITH CAST IRON LID.
- (B) 2" BRASS SCREWED PLUG WITH IRON PIPE THREAD.
- (C) 2" CURB VALVE, MUELLER MARK II ORISEAL VALVE FIPT x FIPT: H-14277.
- (D) 2" COPPER PIPE, TYPE "K".
- (E) 2" SWEAT JOINT COPPER QUARTER BEND.
- (F) 2" CORPORATION STOP, MUELLER H-15023 WITH IPT x CT-110
- (G) 2" SWEAT JOINT x MIPT
- (H) BRONZE SADDLE DOUBLE STRAP MUELLER, FORD, OR JONES
- (I) 6" THICK 3/4" CRUSHED ROCK

NOTE:

METER BOX SHALL BE 2" FROM THE BACK OF THE CURB.

2" BLOW-OFF ASSEMBLY

SCALE: NONE



TOM COLEMAN EXECUTIVE DIRECTOR

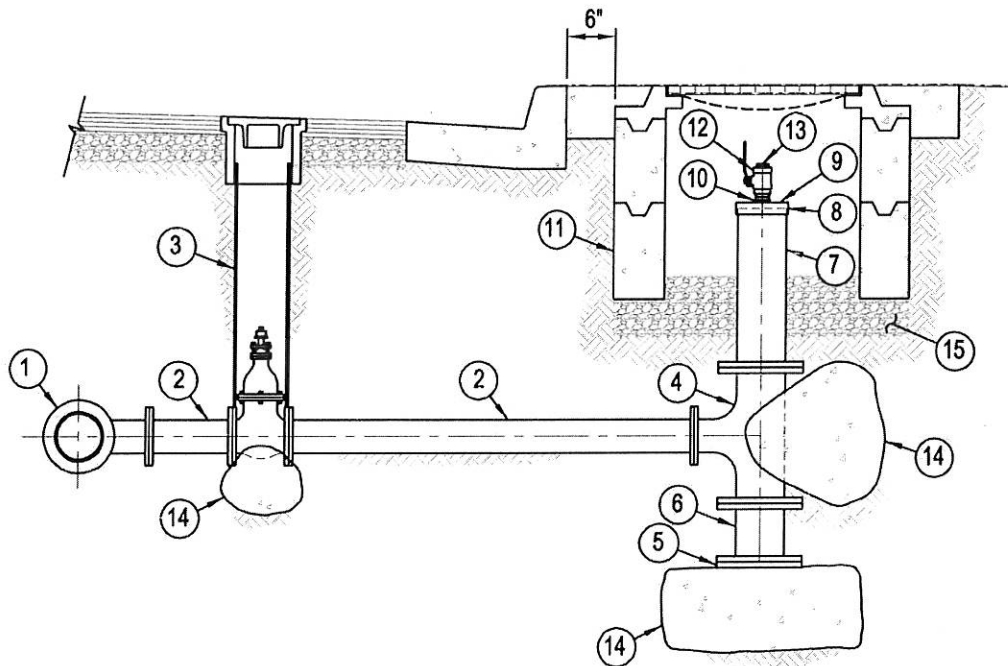
DATE _____

2" BLOW-OFF ASSEMBLY

W-3

LIST OF FITTINGS

- ① WATER MAIN SIZE x 4" FLANGED D.I. TEE
- ② 4" D.I. SPOOL
- ③ 4" RW GATE VALVE, FLG x FLG, AND VALVE BOX RISER AS REQ'D.
- ④ 8" x 4" D.I. TEE, FLG x FLG
- ⑤ 8" D.I. BLIND FLANGE
- ⑥ 8" x 12" LONG D.I. SPOOL, FLG x FLG
- ⑦ 8" x LENGTH AS REQ'D D.I. PIPE SPINDLE PIECE, FLG x GROOVED-END
- ⑧ 8" HEAVY DUTY GROOVED-END COUPLING WITH STAINLESS STEEL HARDWARE
- ⑨ GROOVED-END CAP TAPPED WITH 2" F.I.P.T.
- ⑩ 2" STAINLESS STEEL CLOSE NIPPLE, M.I.P.T., T.B.E.
- ⑪ 24" MANHOLE WITH FRAME AND COVER, AND GRADE RINGS WITH COVER MARKED "BSMWC BO"
- ⑫ 2" STAINLESS STEEL BALL VALVE WITH LEVER HANDLE
- ⑬ 2" THREADED STAINLESS STEEL PLUG
- ⑭ THRUST BLOCKS PER BSMWC STD. DWG. W-8
- ⑮ 12" BASE LAYER OF $\frac{3}{4}$ " CRUSHED ROCK, PLUS 6" ROCK INTO MANHOLE



4" BLOW-OFF/BOTTOM DRAIN ASSEMBLY

SCALE: NONE

N:\BELLFLOWER STANDARDS\W-15_BLOW OFF BOTTOM DRAIN ASSEMBLY.DWG (08-29-14 4:04:17PM)



TOM COLEMAN

EXECUTIVE DIRECTOR

DATE _____

**4" BLOW-OFF / BOTTOM
DRAIN ASSEMBLY**

W-15