

NOTES:

1. METER BOX SHALL BE FURNISHED BY CONTRACTOR.
2. METER SHALL BE FURNISHED BY DISTRICT.
3. THE MINIMUM DISTANCES BETWEEN SERVICE CONNECTIONS IS 24 INCHES.
4. THE METER BOX SHALL BE SET 2" FROM THE BACK OF CURB.

3/4" AND 1" SERVICE W/ OPTIONAL FIRE SYSTEM SUPPLY

SCALE: NONE

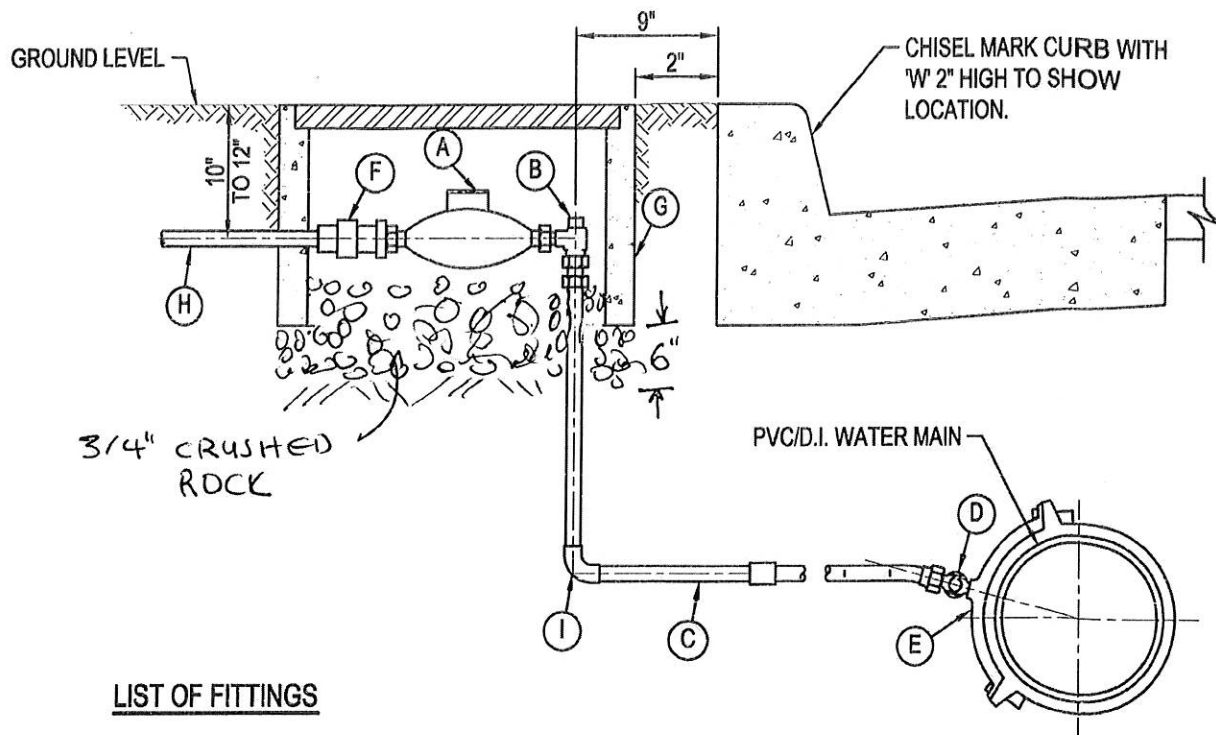


TOM COLEMAN EXECUTIVE DIRECTOR

DATE

3/4" OR 1" SERVICE
W/ OPTIONAL FIRE
SYSTEM SUPPLY

W-1A



LIST OF FITTINGS

- (A) 1 1/2" OR 2" METER PROVIDE BY DISTRICT
- (B) 2" x 1 1/2" OR 2" x 2" ANGLE METER STOP W/ 2" METER FLG
MULLER H-14277 WITH CT110
- (C) 2" COPPER PIPE, TYPE "K" SOFT
- (D) 2" CORPORATION STOP, MUELLER H-14277 WITH CT110
- (E) BRONZE SADDLE, MUELLER, FORD OR JONES
- (F) 1 1/2" OR 2" OVAL METER ADAPTER
- (G) J.R. 5 1/2 BOX, W/ READING LID POLY-CAST
- (H) CUSTOMER SERVICE LINE (BY OTHERS).
- (I) 2" SWEAT JOINT COPPER QUATER BEND

NOTES:

1. METER BOX SHALL BE FURNISHED BY CONTRACTOR.
2. METER SHALL BE FURNISHED BY DISTRICT.
3. THE METER BOX SHALL BE SET 2" FROM THE BACK OF CURB.

1-1/2" AND 2" SERVICE

SCALE: NONE



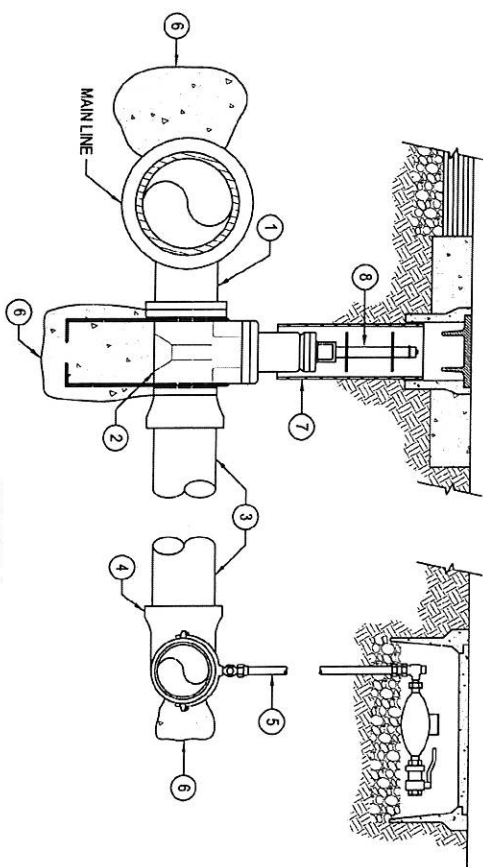
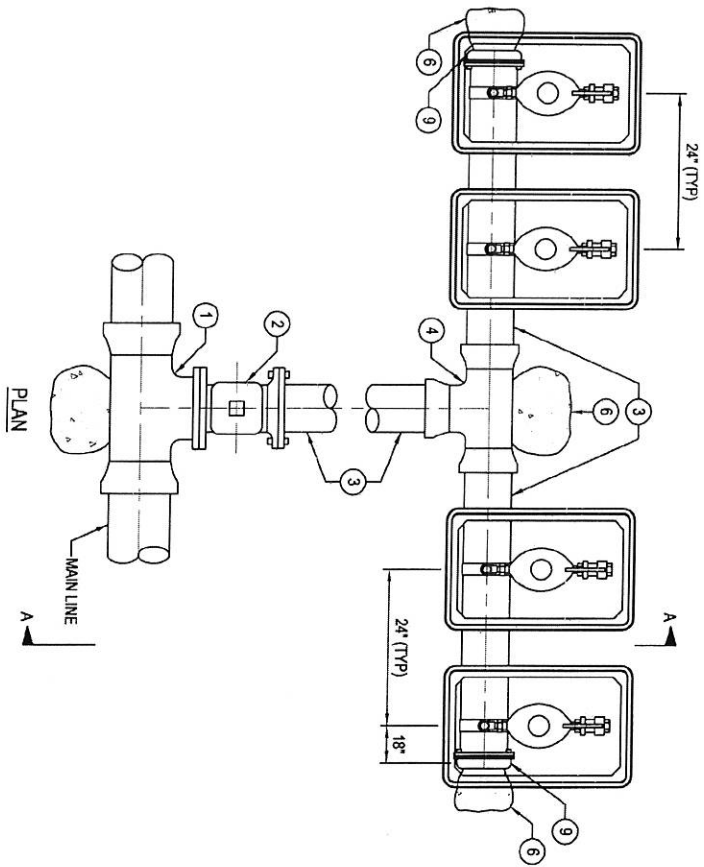
TOM COLEMAN

EXECUTIVE DIRECTOR

DATE _____

1-1/2" or 2" SERVICE

W-2



SECTION A-A

ITEM MATERIALS

- ① MAIN SIZE X 4\"/>

NOTES

1. THE ASSEMBLY SHALL NOT BE USED FOR FEWER THAN 10 SERVICE CONNECTIONS UNLESS APPROVED BY BSMWC.
2. SERVICE CONNECTIONS FOR FIRE SPRINKLER SYSTEMS SHALL NOT BE PERMITTED ON THE MANIFOLD.

BACK OF SIDEWALK

BACK OF CURB

FACE OF CURB

LIP OF GUTTER

MANIFOLD ADJACENT TO SIDEWALK

BACK OF CURB

FACE OF CURB

LIP OF GUTTER

MANIFOLD ADJACENT TO CURB

DATE _____
TODD COLEMAN EXECUTIVE DIRECTOR

3/4\"/>

W-10